




# PLAN Systems

Privacy

Logistics

Accessibility

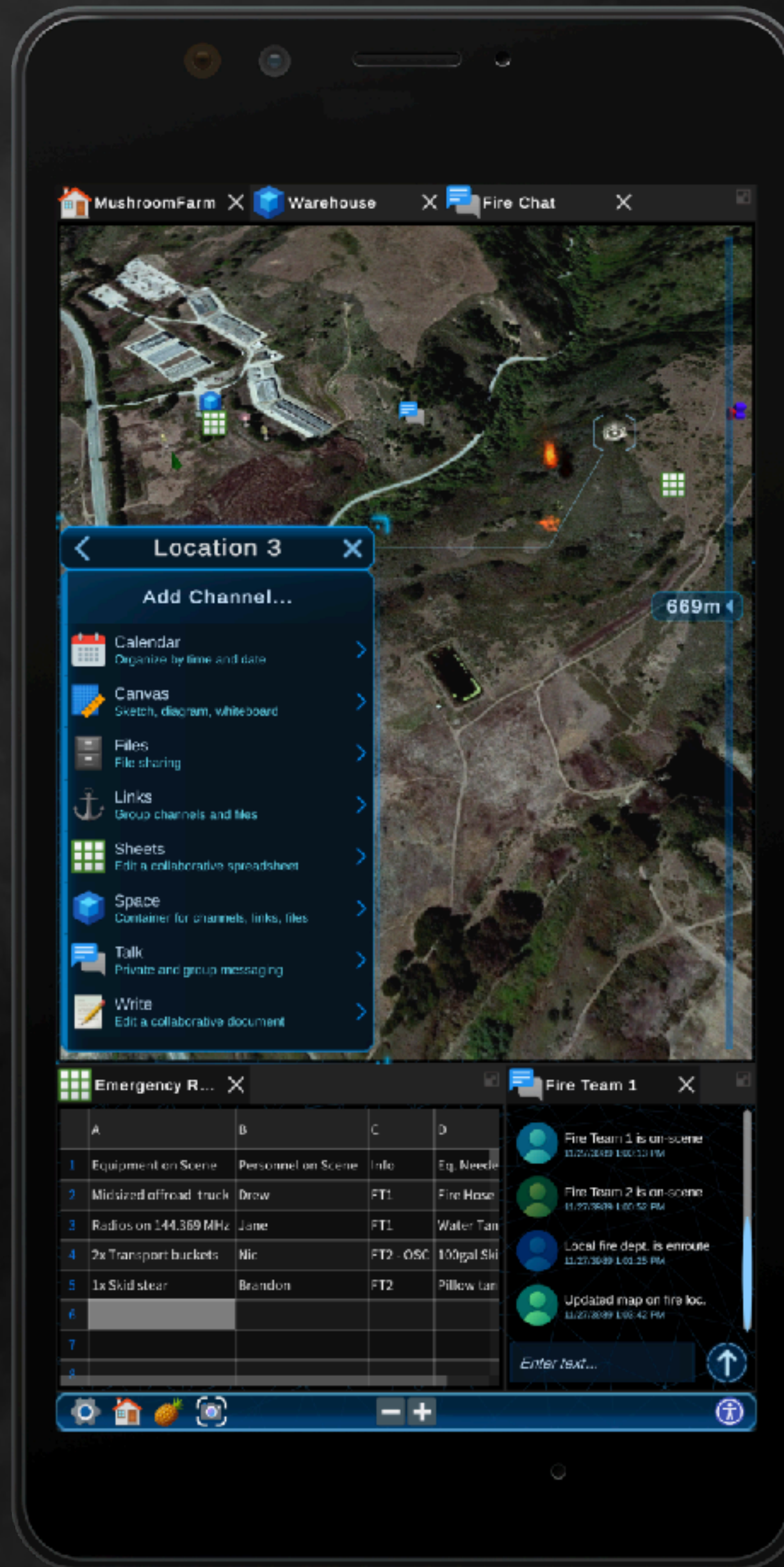
Networks



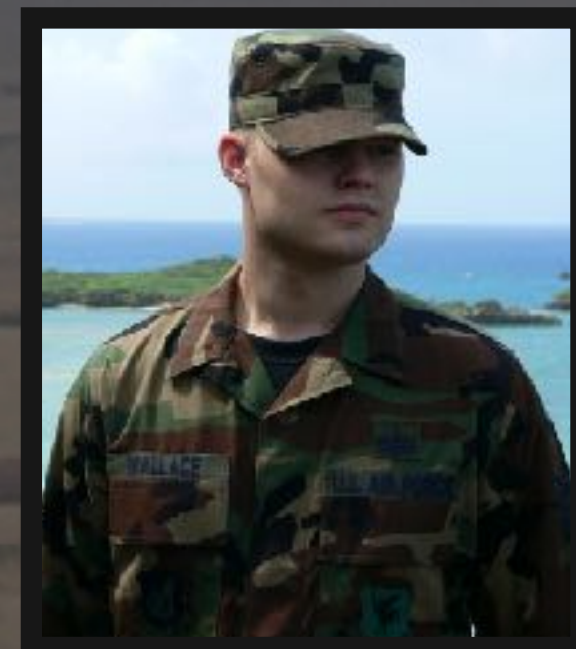
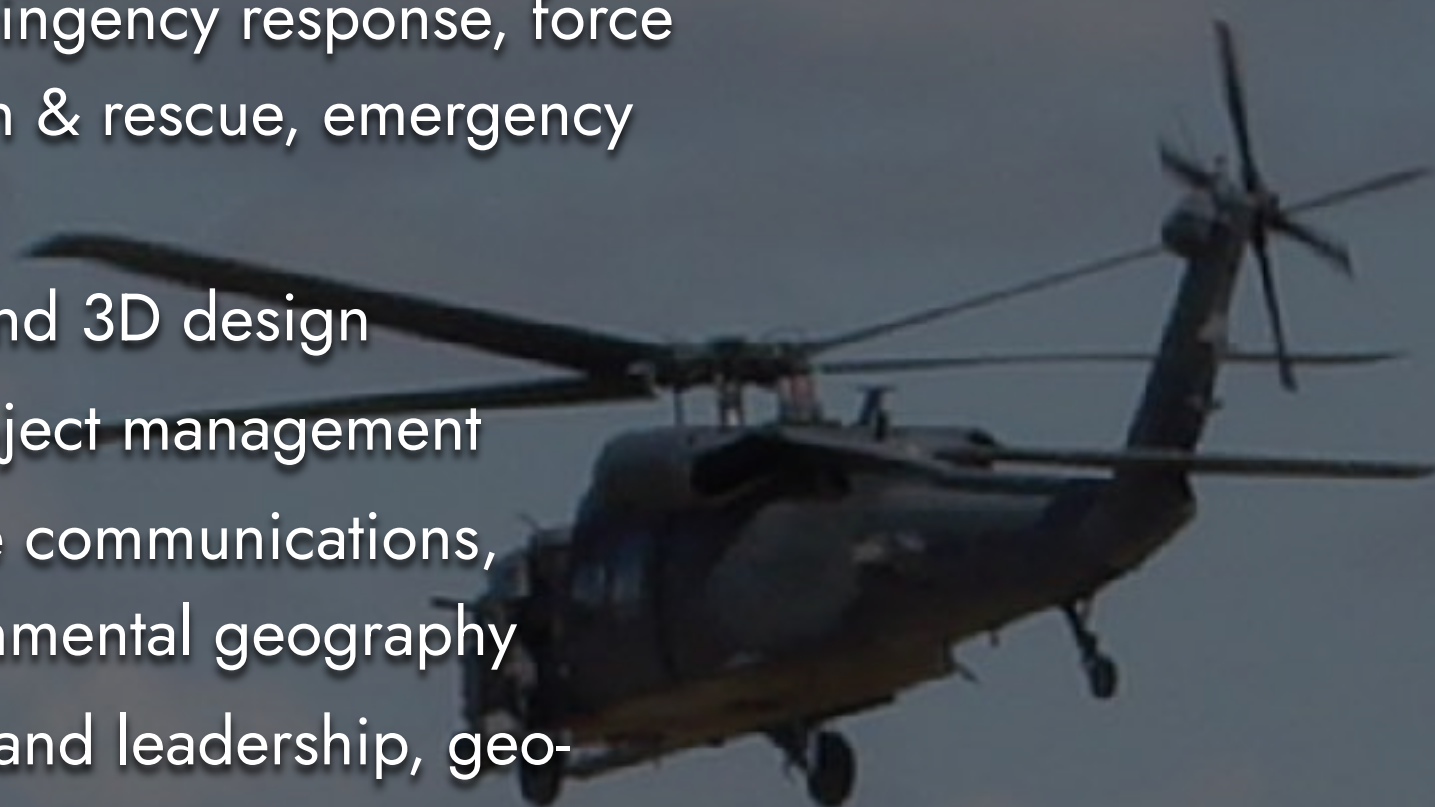
People need to securely connect with each other and engage in meaningful projects, so PLAN Systems is developing tools for realtime collaboration, experiential education, and archival knowledge.

# PLAN

Designed for realtime communications, spatial collaboration, media broadcasting, and secure distributed data storage.



- USAF veteran senior intelligence operations analyst
- Intelligence systems, contingency response, force protection, combat search & rescue, emergency medical evacuation
- Multi-media production and 3D design
- Technology solutions, project management
- UT Austin cross discipline communications, sustainability, and environmental geography
- Community organization and leadership, geo-spatial planning



**Brandon D. Wallace**

President, Director of Operations  
GeoSpatial Planning & Technology Solutions

- US Navy 688i nuclear submarine officer
- Graduate in Computer Science at Cornell
- Co-Founder and CTO of SoundSpectrum, a 3D audio visualization software company
- Veteran developer, building multi-platform software on desktop and mobile for 20 yrs
- Inventor, licensed software to Apple Inc., authored U.S. patent 9971632
- Specialist in realtime 3D technology, UX architecture, information visualization, and distributed systems



**Drew O'Meara**

Technical Director, Chief Architect  
Realtime 3D Graphics & Distributed Systems Architecture Expert





- Serial startup software engineer and systems development advisor
- Developer advocate, engineering manager, and dev ops engineer
- Independent consultant for engineering teams at startups and fledgling non-profits
- Experience with safety-sensitive projects and designing buildings

**Tim Gross**

Software Engineer & Build Systems  
Systems Security Engineer

- A 30 year veteran of digital media industries leadership
- Portfolio manager for Blackbaud, Inc., the leading software company for non-profit organizations in the U.S.
- Science and technology writer and producer at CNN
- Led the launch of CNN.com as Executive Producer
- Experience with operations in leveraging Software as a Service.

**Jeff Garrard**

Organization Development Director  
Digital Media Industries



**Anton Shevchenko**

Software Engineer & Back-end Ops  
Web Systems Integration

**Angel Robinson**

Community Development  
Event Production Specialist

**Kahlil Calavas**

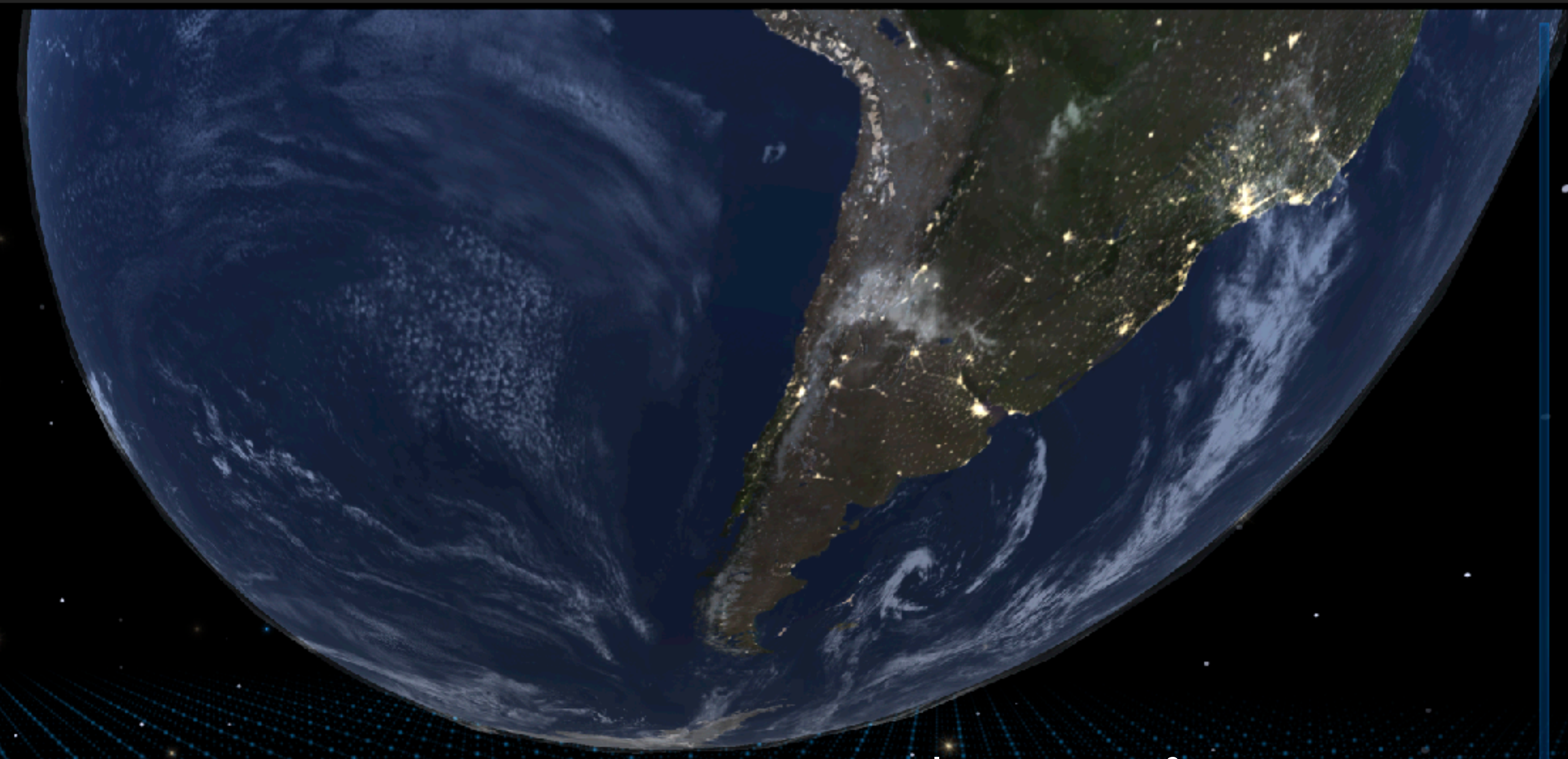
Software Developer  
Unity3D Multiplayer AR/VR

**Gordon Fuller**

Accessibility Technology  
CEO of Fullervision



# PLAN



Made possible by an innovative channel system & data-model, inspired by IRC, Linux, and Elinor Ostrom.



## Applications of PLAN

- Realtime Communications
- Immersive Environments
- 3D Content, Files, & Media
- Education & Visualization
- Collaborative Spaces
- Infrastructure Reliability

# Collaborative Spaces

Location 4

Add Channel

- Calendar  
Organize by time and date
- Canvas  
Sketch, diagram, whiteboard
- Files  
File sharing
- Links  
Group channels and files
- Sheets  
Edit a collaborative spreadsheet
- Space  
Container for channels, links, files
- Talk  
Private and group messaging
- Write  
Edit a collaborative document





# Realtime Communications

Multi-tasking with Spaces in Spaces



- Hi  
12/2/3989 12:13:30 PM
- Oh hey  
12/2/3989 12:13:34 PM
- We have to make some big decisions today.  
12/3/3989 11:14:06 AM
- This office is really amazing, love the view.  
12/3/3989 11:14:26 AM

# 2D-3D Data Views

PLAN (noun) a detailed proposal for doing or achieving something.

# Customizable Environments and Content

Modules and Templates



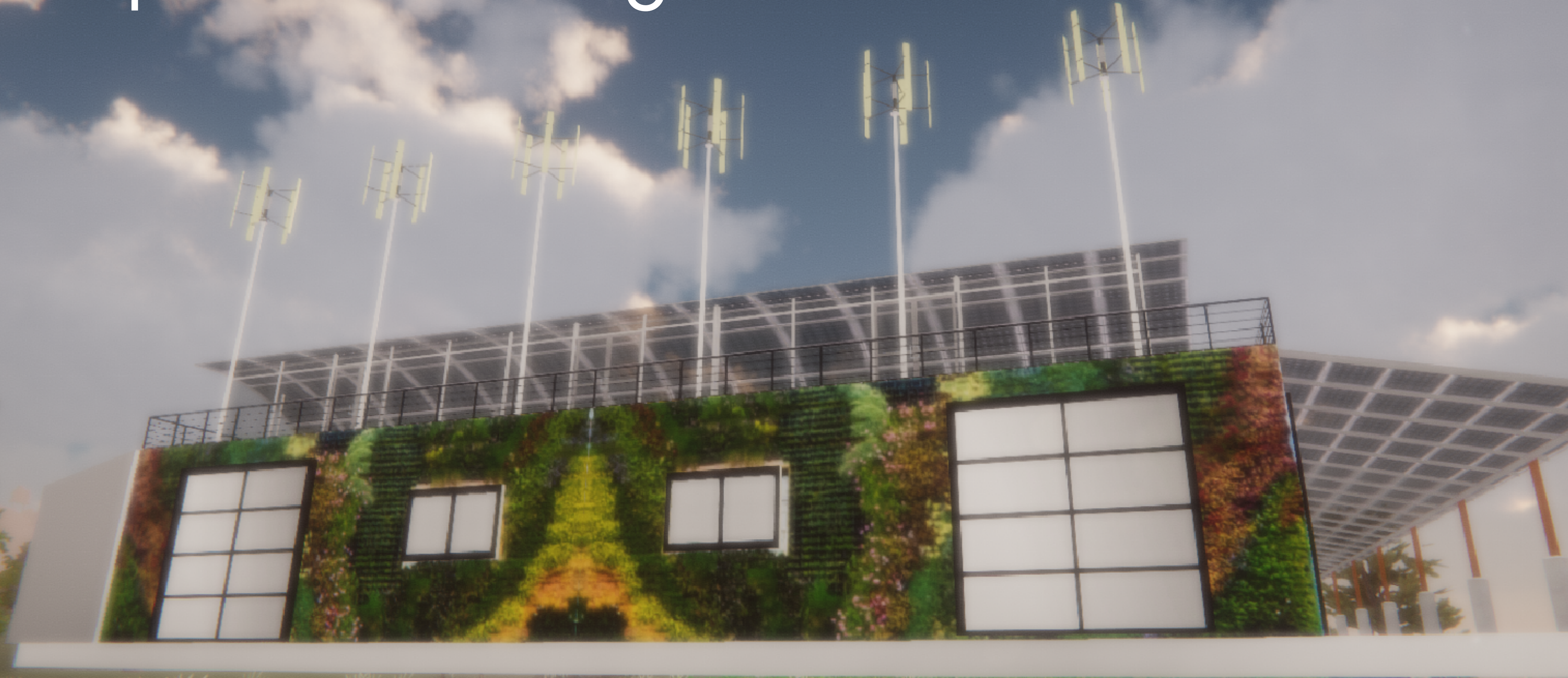
# Internet Independence

Take your data off-line or off-grid.

The screenshot shows a software interface with a dark blue background and a grid of glowing blue dots. On the left, there is a vertical menu with three items: 'About' (with an information icon), 'Add Channel...' (with a grid icon), and 'Place Structure' (with a person icon and the subtext 'Place buildings and terrain'). The 'Place Structure' item is highlighted. To the right of the menu, a 3D map shows a central point with several icons (a grid, a message bubble, a cube, and an anchor) and a distance label '1,037m' with a left-pointing arrow. The top of the interface has several tabs with icons and labels: 'MushroomFarm', 'Warehouse', 'Kitchen Shifts', and 'Secure Messa...'. The bottom of the interface has a toolbar with icons for settings, home, a pineapple, a camera, and zoom in/out buttons.

The screenshot shows the homepage of the PLAN Systems website. The browser's address bar displays 'https://www.plan-systems.org/'. The page features a large, stylized hexagonal logo with a white circle in the center, set against a background of a 3D grid of grey cubes. Below the logo, the text 'PLAN Systems' is displayed in a white, sans-serif font. At the bottom of the page, there are social media icons for email, Facebook, and Twitter, along with a small person icon in the bottom right corner.

# Experiential Design and Education



The Mushroom Farm, prototype Space

# PLAN Systems

Technology - 501(c)(3)

Advancing technology solutions as public goods in service of science, education, and economic development; working with and through qualifying organizations.

- Stewards open source tech roadmap
- 501(c)(3) compliance
- Support to qualifying orgs
  
- Community supported
- Donations tax deductible
- Qualifying quid-pro-quo contracts

Exclusive service to charitable class

## **Mission**

## **Focus**

## **Funding**

## **Commitments**

# plan.tools

Affiliate and Partner Model

An ecosystem for technology services, tools, and custom development for business communities and private networks; a foundation of support for PLAN Systems FOSS development.

- Software sales and support
- Hardware kits
- Custom engineering & development

- Software as a Service (SaaS)
- B2E, B2B
- Private investment

Conventional ROI, Donates IP & Royalty / Equity Stake to PLAN Systems

# PLAN Roadmap

	PLAN Prototype	MVP*	Medium Term	Long Term
Infrastructure "pnode"	Linux, macOS, Windows	Linux, macOS, Windows, Android	DIY imaging	Curated imaged hardware & support
User Client (Unity)	Linux, macOS, Windows	Linux, macOS, Windows, Android, iOS*	Multi-platform installer	Native install
Capabilities	Messaging, notes, 2D/3D/maps, feeds	Files, calendars, scheduling	Task & supply management	Spreadsheets, archiving, data visualization
Integration Level	Interoperable data formats & protocols	Web publishing (file and media serving)	Developer SDK	Developer support & training

## ✓ PLAN Prototype (Pre-Alpha)

- Persistent data channels
- Cross-platform compatibility
- Multi-tasking tabs
- AR VR Visor / Panel System
- Navigate spaces within spaces
- Asset Module SDK

## ■ P2P Infrastructure and Vault Storage implementation

- Accounts, File System

## ■ Visor / Panel System

## ■ Spatial Navigation and Mapping Tools

## ■ Channel UI / UX

- Messaging
- Conference
- Tasks
- Calendar
- Docs, Spreadsheets

## ■ Asset Module SDK & Templates

## ■ PLAN MVP Testing

- Hardware integration and testing
- A new PLAN installation includes:
  - Community Genesis
  - Preinstalled Spaces
  - Expanding inventory of Channels
  - Infrastructure to develop instruments, templates, and modules

## ■ Distribution:

- 6 platforms, App & SDK
- Mac, Win, Linux, iOS, Android, Unity Asset Store
- Fundraising and outreach with contributing networks
- Focus on regenerative agriculture and accessibility

\* time dependent on participation



# Components of PLAN

A complete and integrated system designed for community-centric organization, persistent & secure data, and paired with cutting edge 3D interfaces.

## P2P Data-Model

- Community centric permissions
- P2P Files, media, and content server
- Supports public and private channels
- Secure data services

## Extensible Channels & Adapters

- Enable data visualization & collaboration
- Talk, notes, task & supply management
- Geo-location & tagging



## Pluggable Client Interface

- Cross platform 3D engine
- Realtime collaboration
- Persistent interface
- VR/AR/XR, CAD ready
- Custom scenes, modules, and templates
- Navigate spaces within spaces

## Pluggable Data Storage Layer

- Distributed data store & archive
- Secure pluggable encryption
- "Inflates" onto any device
- Built for scalability & persistence
- Pluggable DLT infrastructure
- Future-proof upgradability

External platform integrations are for example purposes only, and are not required.

# PLAN Software Design Principles

A community-centric, peer-to-peer collaboration suite that ensures:



**Total Data  
Ownership**



**Community-  
Centric  
Permissions**



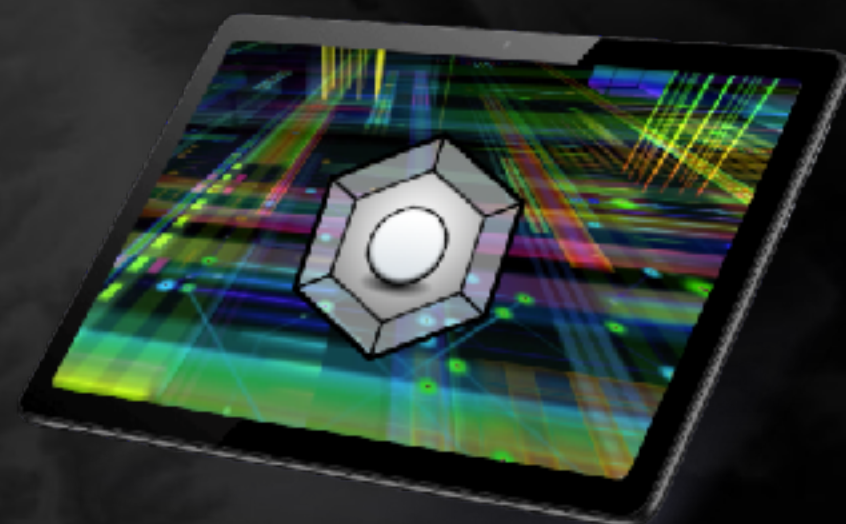
**Off-grid First  
Operation**



**Usability and  
Accessibility as  
a Core Focus**



**Total Data Privacy,  
Real-World Security  
Provisioning**



**Native  
3D Interfaces  
"on the metal"**



**Gatekeeperless  
Infrastructure &  
Interfaces**



**Modular &  
Pluggable  
Components**



**Tools for Data &  
Infrastructure  
Redundancy**



**Hardware Agnostic  
Open Source  
Flexibility**



# Use-Cases:



## Emergency Response

Real-time, off-grid capable C3 systems.



## Private Networks

Pluggable and adaptable for any network.



## Science & Education

Collect data in the field, write reports, share files.



## Content & Data Stewards

Archival security that is reliable and redundant.



## 501c3 Organizations

Collaborate and manage your team and projects.



## Civic Institutions

Community governance with transparency & encryption.



## Systems Resilience

Architecture, Engineering, and Construction



## Business & Land Development

Deploy 3D worlds to manage your enterprise.

# Engineering Future Resilience

PLAN Systems is a solutions oriented non-profit developing invaluable communications infrastructure for people. We work with sponsors and partners to achieve our roadmap milestones.

All contributions go to support the PLAN codebase, core development, and initiatives derived from our charitable purpose.

## Core Development Supports

- Science & education networks
- Non-profits & civic organizations
- Privacy & accessibility networks
- First responders & humanitarian support
- Regenerative systems: food, water, power
- Historical preservation

## Our Technology Services

- Custom Application Development
- Spatial Mapping and Logistics Planning
- 3D Content and Multimedia Design
- Infrastructure Engineering
- Technology Solutions Consulting
- Hardware / Software Integration

PLAN Design Principles Compared		Design Principles (Definitions below)																
Software Platform(s)	Classification	Total Data Privacy	Total Data Ownership	Community Centric Permissions	Data & Infrastructure Redundancy	Off-Grid First	Usability and Accessibility Focused	Production Ready / Mature	Native Spatial UX	Spatial UX App Support	Hardware Agnostic	Pluggable	Gatekeeperless	License Model	Fee Model			
PLAN	Distributed OS & Swarm (p2p)	✓	✓	✓	✓	✓	✗	✓	✓	✓	✓	✓	✓	GPL	Free			
Linux	Device OS	✓	✓	✓	✗	✓	✓	✓	✗	✓	✓	✓	✓	GPL	Free			
Android	Device OS	✓	✓	✓	✗	✓	✓	✓	✗	✓	✓	✓	✗	Apache 2.0	Free			
Windows	Device OS	✓	✓	✓	✗	✓	✓	✓	✗	✓	✓	✓	✗	©	Per Seat + Features			
macOS	Device OS	✓	✓	✓	✗	✓	✓	✓	✗	✓	✗	✓	✗	©	Hardware			
iOS	Device OS	✓	✓	✗	✗	✓	✓	✓	✗	✓	✗	✓	✗	©	Hardware			
iCloud	Personal Cloud + Services	✗	✗	✗	✓	✗	✓	✓	✗	✗	✗	✗	✗	©	Freemium / Sub.			
MS Office 365	Productivity Suite & Cloud	✗	✗	✓	✓	✗	✓	✓	✗	✓	✓	✓	✗	©	Freemium / Sub.			
G-Suite, Google Drive	Productivity Suite & Cloud	✗	✗	✓	✓	✗	✓	✓	✗	✓	✓	✓	✗	©	Freemium / Sub.			
Slack	Team Messaging + Services	✗	✗	✓	✓	✗	✓	✓	✗	✓	✓	✓	✗	©	Freemium / Sub.			
Amazon Web Services	Web Infrastructure Stack	✗	✗	✓	✓	✗	✓	✓	✗	✓	✓	✓	✗	©	per Volume			
FB, Twitter, Instagram	Social Media / Feed-Follower	✗	✗	✓	✓	✗	✓	✓	✗	✓	✓	✓	✗	©	Freemium / Ads			
Discord, Telegram	Team Messaging + Files	✓	✗	✓	✓	✗	✓	✓	✗	✓	✗	✓	✗	©	Free			
Salesforce	Enterprise CRM	✗	✗	✓	✓	✗	✓	✓	✗	✓	✓	✓	✗	©	Per Seat Subscription			
Google Maps	GeoSpatial Data &	✗	✗	✗	✓	✗	✓	✓	✓	✓	✗	✗	✗	©	Freemium / Data Fees			
Third-party Email Service	Messaging Service	✗	✗	✗	✓	✗	✓	✓	✗	✓	✓	✓	✗	©	Freemium			
Signal, Wckr	Messaging Service	✓	✓	✗	✓	✗	✓	✓	✗	✓	✗	✗	✗	©	Free			
Mastodon, cabal	Messaging Service (p2p)	✗	✓	✓	✓	✓	✗	✓	✗	✓	✓	✓	✓	mixed	Free			
Self-hosted Email	Messaging Protocol	✓✗	✓	✗	✗	✓	✗	✓	✗	✓	✓	✓	✓	n/a	n/a			
IRC	Messaging Protocol	✓	✓	✓	n/a	✓	✗	✓	✗	✓	✓	✓	✓	n/a	n/a			
Beaker + Dat	Web Infrastructure Stack	✓	✓	✓	✓	✓	✗	✓	✗	✓	✓	✓	✓	MIT	Free			
IPFS	File Sharing Protocol	✓	✓	✗	✓	✓	✗	✓	✗	✓	✓	✓	✓	MIT	Free			
FalconView + BFT	GeoSpatial Integrated Feeds	n/a	✓	n/a	✓	✓	✗	✓	✓	✗	✓	✓	✗	U.S. DoD only	U.S. DoD only			
Unity, Unreal, CryEngine	3D Engine (AAA)	✓	✓	✓	✗	✓	✗	✓	✓	✓	✓	✓	✗	©	Freemium / Fee Cap			
GoDot, OGRE	3D Engine (FOSS)	✓	✓	✗	✗	✓	✗	✓	✓	✗	✓	✓	✓	MIT	Free			
Hyperledger	Enterprise DLT	✓	✓	✓	✓	✓	✗	✓	✗	✓	✓	✓	✓	Apache 2.0	Free			
Holochain, Substrate, IOTA	Instanced DLT	✓	✓	✓	✓	✓	✗	✗	✗	✓	✓	✓	✓	Apache 2.0	Free			
Ethereum	Global DLT (Pure Distributed)	✓	✓	✓	✓	✗	✗	✓	✗	✓	✓	✓	✓	mixed	Free			
EOS, Cosmos, Polkadot	Global DLT (Validated)	✓	✓	✓	✓	✗	✗	✗	✗	✓	✓	✗	✗					

**Design Principles & Definitions:**

- Total Data Ownership:** Systems and components must provision for assured data accessibility + data non-deniability + data portability
- Total Data Privacy:** Only the designated owner(s) have permissions authority and cryptographic access to their data
- Community Centric Permissions:** Supports nesting hierarchies; create/manage accounts + local authority + flexible (user-oriented) governance
- Off-Grid First:** Data accessible, usable, updatable all without the Internet; self-contained
- Usability and Accessibility Focused:** Open protocols that are adaptable for accessibility, usability, and intended for users of any technical skill level
- Spatial UX App Support:** Integrated/full realtime 3D graphics capability with the full power of the workstation at your disposal
- Hardware Agnostic:** No technical, legal, or arbitrary restrictions on the number or types of devices
- Pluggable & Extensible:** Extend functionality natively; designed and offered with the intent that others can freely grow, enhance, or fork the platform
- Gatekeeperless:** Full source code may be used, modified and distributed—commercially or non-commercially. No third-party needed to deploy, access, or manage data. No costs, fees, or significant dependencies
- Distributed Data & Infrastructure Redundancy:** Integrated data backup/replication and recovery; concurrency of components, lack of a global clock, and tolerates independent failure of components

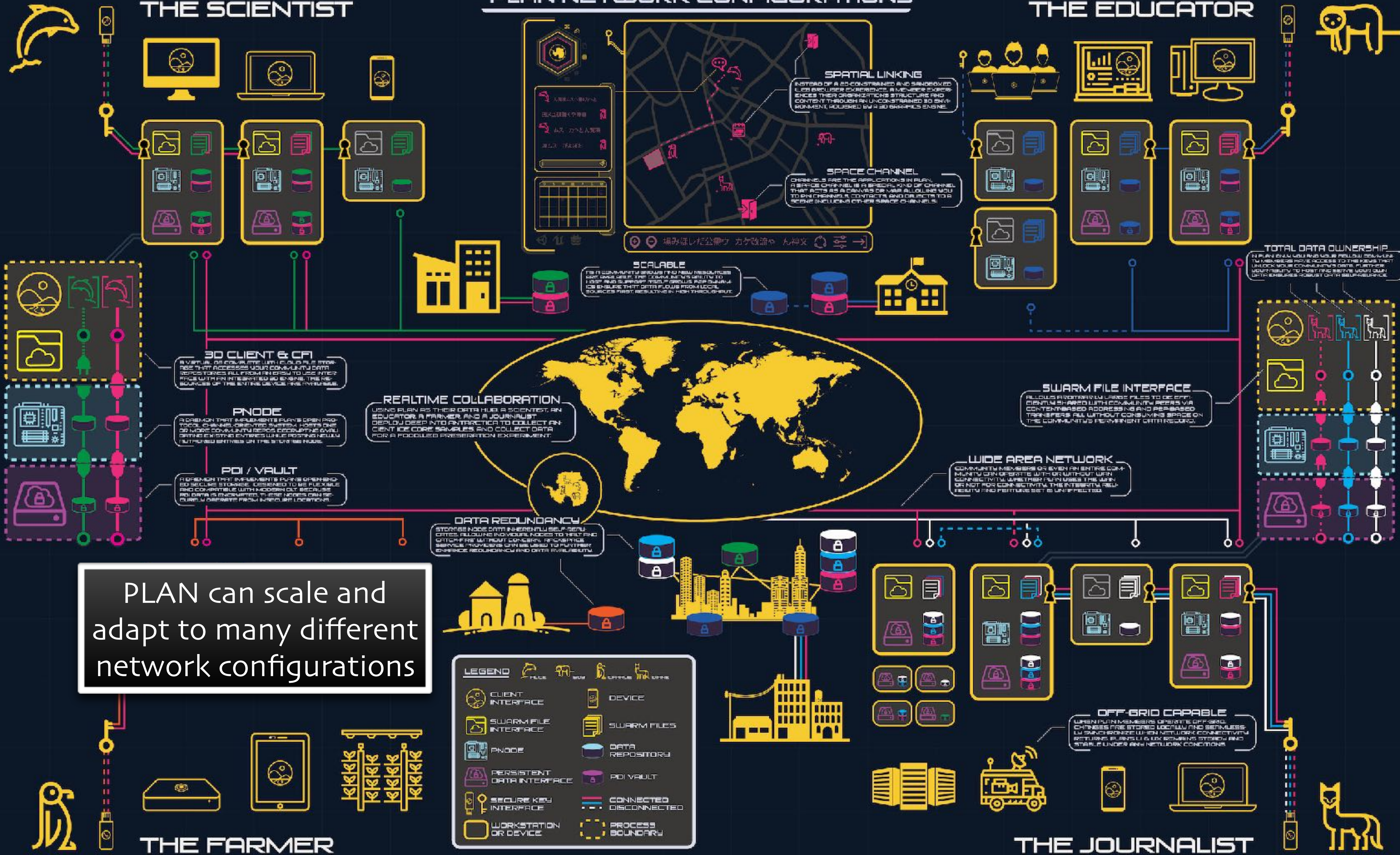
Bottom line: the design values of any system show up in both the functionality and limitations of the system. This chart helps us compare industry wide tradeoffs through the lens of our design principles



# THE SCIENTIST

# PLAN NETWORK CONFIGURATIONS

# THE EDUCATOR



PLAN can scale and adapt to many different network configurations

LEGEND	
	CLIENT INTERFACE
	SWARM FILE INTERFACE
	PNODE
	PERSISTENT DATA INTERFACE
	SECURE KEY INTERFACE
	WORKSTATION OR DEVICE
	DEVICE
	SWARM FILES
	DATA REPOSITORY
	POI VAULT
	CONNECTED / DISCONNECTED
	PROCESS BOUNDARY

# PLAN Systems

Technology 501(c)(3) - 83-0636676  
5900 Balcones Dr., Ste 100  
Austin, TX 78731-4298  
512-553-8644

---

We are proud to formally introduce you to PLAN.

The systemic failure of Big Tech communications systems during multiple national emergencies prove the necessity of a more robust information infrastructure for group forming networks and communities. Led by two U.S. Air Force and Navy veterans, we are developing software tools and instruments for multimedia distribution, group collaboration, experiential education, and archival knowledge. We aim to shape the technology landscape in a way that prioritizes privacy, data ownership, and accessibility over big tech dependency.

PLAN is designed to support mission critical applications including: secure communications, swarm file sharing, digital media broadcasting, and the ability to take your data with you anywhere. We cordially invite you to [learn more](#) about this innovative technology. If you are interested in supporting this important effort, there are few ways you can contribute:

**\$2.1m Capital Raise** - A capital raise of \$2.1M will move PLAN 3D into its next stage of development with a 14 month benchmark based roadmap. Funds will go to pay for software engineering and development operations resulting in a Beta launch of the PLAN 3D client.

**Sponsor, Partner, and Developer Referrals** - We have a multi-discipline team, and growing a wide network of supporters and service partners. To start, we can provide custom implementations, full-stack application development, and capabilities that position organizations for the coming [spatial intranets](#). Sponsor organizations and service partners are invited to work with us in developing these important tools. Let's [schedule a time](#) to connect, and feel free to refer an organization or initiate a proposal [here](#).

If PLAN is not a good fit for you personally, please consider connecting us with other's in your network to support the development of community-centric technology and digital privacy tools usable by non-technical people.

Please share this message far and wide with your friends and colleagues so we can fuel the development of peer-to-peer encryption and collaborative systems that we own. We can help each other become tangibly more secure and resilient as a society.

Warm Regards,

Brandon D. Wallace, President  
Drew O'Meara, Chief Architect  
[PLAN-Systems.org](http://PLAN-Systems.org)  
[info@plan-systems.org](mailto:info@plan-systems.org)





PLAN Systems



Stonehenge



The FARM



Project Chat



Planning Session #1! Meet here at 11:11am!  
5/1/2021 1:50:38 PM



Ok perfect! I love spatial planning with you!  
5/1/2021 1:51:06 PM



PLAN-Systems.org

Email: [info@plan-systems.org](mailto:info@plan-systems.org) | Ph: 512-553-8644

Enter text...





